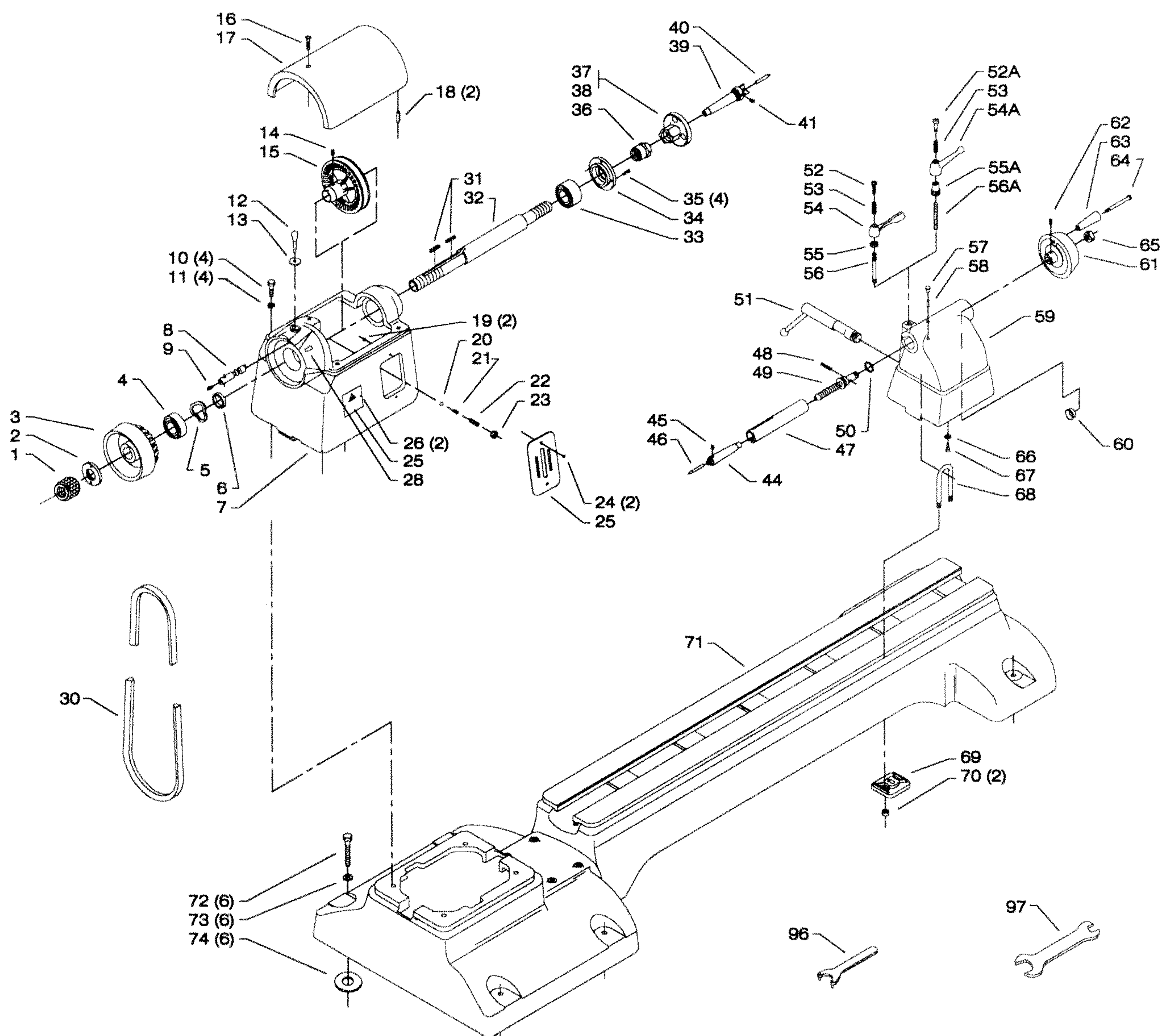
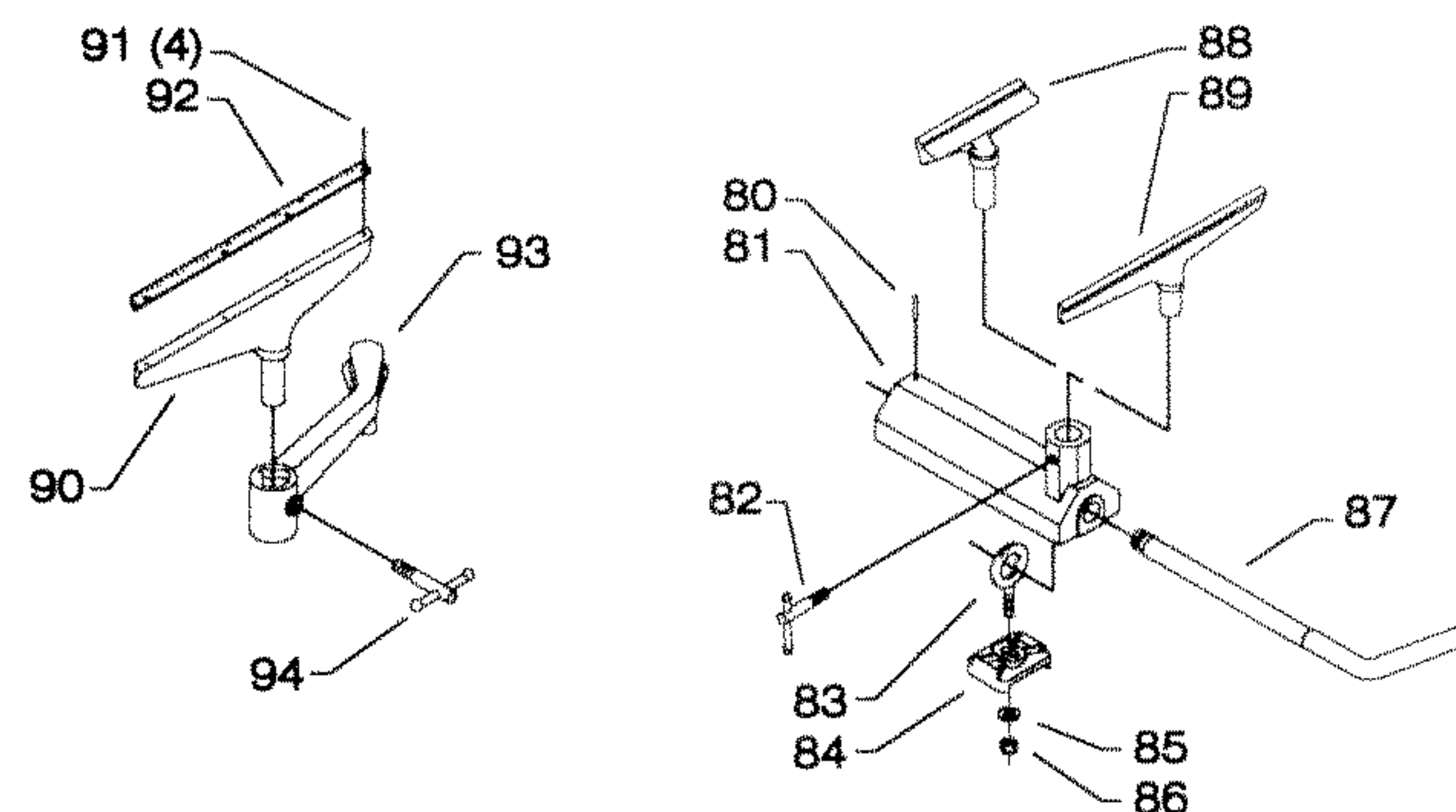


EARLY & INTERMEDIATE MODELS ONLY





# REPLACEMENT PARTS

REF NO	PART NUMBER	DESCRIPTION	REF NO	PART NUMBER	DESCRIPTION
1	902-08-061-3098	NUT	59	434-03-312-0001	TAILSTOCK ASSY, INCL:
2	434-03-079-5002	RETAINER	60	920-75-103-1387	BUSHING
3	434-03-100-5001	HANDWHEEL	61	930-01-043-1338	HANDWHEEL ASSY, (See Service Note A), INCL:
4	904-10-031-4577	COLLAR	62	901-04-140-0252	5/16-18 X 5/16" HEX SOC SET SCREW
5	928-06-010-7352	WAVE WASHER	63	1085958	HANDLE
6	920-04-020-5360	BALL BEARING	64	905-07-011-3111	PIN
7	434-03-058-5001	HEADSTOCK	65	902-01-020-1266	1/2-13 JAM NUT (Early Models Only, See Service Note A)
8	434-03-071-5002	PIN	66	904-03-020-1764	1/4" INT TOOTH WASHER
9	901-04-150-0208	1/4-20 X 1/4" HEX SOC SET SCREW	67	901-09-060-6131	1/4-28 X 1/2" HEX HD SCREW
10	901-01-060-0642	3/8-16 X 1" HEX HD SCREW	68	434-01-111-0003	U STUD
11	904-02-020-1704	3/8" LOCK WASHER	69	434-03-072-0001	CLAMP PLATE
12	434-03-067-5001	HANDLE	70	902-01-210-1212	5/16-24 LOCK NUT
13	904-01-031-2907	3/16" FLAT WASHER	71	434-03-306-5001	BED ASSY
14	901-04-190-9415	1/4-20 X 1/4" HEX SOC SET SCREW	72	901-01-060-0644	3/8-16 X 2 1/2" HEX HD SCREW
15	434-03-130-5001	SPINDLE PULLEY	73	904-01-010-1615	FLAT WASHER
16	901-02-030-0478	5/16-18 X 7/8" FLAT HD SCREW	74	904-08-023-1075	RUBBER WASHER
17	434-03-031-5002	HEADSTOCK COVER	*	46-707	TOOL REST BASE (Current Models Only), CONST OF:
18	905-01-010-5075	1/4" X 3/4" SPRING PIN	80	905-01-010-2706	3/16" X 1" SPRING PIN
19	902-01-120-9232	#06-32 HEX NUT	81	434-08-005-0001	TOOL REST BASE, INCL:
20	921-01-010-0028	STEEL BALL	82	434-02-327-5004	CLAMP LEVER
21	928-01-040-7362	SPRING	83	434-03-112-0002	EYE BOLT
22	901-04-190-0212	5/16-18 X 3/4" HEX SOC SET SCREW	84	434-08-072-0001	CLAMP PLATE
23	902-01-020-5435	5/16-18 JAM NUT	85	904-01-010-1615	FLAT WASHER
24	901-02-010-0588	#06-32 X 3/4" ROUND HD SCREW	86	902-01-213-1635	3/8-16 LOCK NUT
25	402-04-031-0001	SWITCH OPENING COVER (Not Supplied with Basic Machine)	87	434-08-108-0001	CAM ROD
26	901-06-450-2250	#04 X 3/16" ROUND HD SCREW	88	46-805	6" TOOL REST
27	406-03-754-0001	NAMEPLATE	89	46-711	12" TOOL REST
28	960-03-010-1862	DECAL	90	46-431	CALIBRATED TOOL REST, INCL:
30	49-146	V-BELT (65" OC)	91	901-02-030-0457	#06-32 X 1/2" FLAT HD SCREW
31	927-03-010-2662	KEY	92	434-03-063-5001	SCALE
32	434-03-085-5002	SPINDLE	93	46-430	OFF-SET BASE, INCL:
33	920-07-080-5334	BALL BEARING	94	434-02-327-5004	CLAMP ASSY
34	434-02-079-5003	BEARING RETAINER	96	955-02-990-1477	SPANNER WRENCH
35	901-03-010-3318	#10-32 X 3/8" HEX SOC HD SCREW	97	434-01-101-0002	WRENCH
36	902-01-201-5456	SPINDLE NUT - LH			
37	46-936	3" RH FACE PLATE			
38	46-937	6" RH & LH FACE PLATE			
39	46-933	DRIVE CENTER, INCL:			
40	434-01-022-0010	CENTER			
41	901-04-190-0253	1/4-20 X 1/4" HEX SOC SET SCREW			
44	46-439	CUP CENTER, INCL:			
45	901-04-190-9412	1/4-20 X 3/16" HEX SOC SET SCREW			
46	434-01-022-0010	CENTER			
*	434-04-392-5001	TAIL STOCK ASSY, CONST OF:			
47	434-02-077-5001	RAM			
48	905-01-010-2704	1/8" X 3/4" SPRING PIN			
49	434-03-112-5005	ADJUSTING SCREW (See Service Note A)			
50	904-01-031-2903	FLAT WASHER			
51	434-03-342-5001	ECCENTRIC SHAFT ASSY			
52	406-03-112-0006	SPECIAL SCREW (Current Models Only)			
52A	406-03-112-0003	SPECIAL SCREW (Early Models Only)			
53	406-03-122-0002	SPRING			
53A	406-03-033-0001	HANDLE (Early Models Only)			
54	406-03-033-0002	RATCHET HANDLE (Current Models Only)			
54A	902-04-030-1408	7/16-14 SERRATED NUT			
55	902-01-201-2579	7/16-14 HEX NUT (Current Models Only)			
56	406-03-111-0002	STUD (Current Models Only)			
56A	901-04-190-0288	7/16-14 X 2" HEX SOC SET SCREW (Early Models Only)			
57	907-00-000-2486	OIL HOLE COVER			
58	905-01-010-2729	3/16" X 1/2" SPRING PIN			

## ITEMS LISTED BELOW FOR USE WITH EARLY & INTERMEDIATE MODELS ONLY

*	46-171	TOOL REST BASE, CONST OF:
100	904-10-101-3151	STEEL BUSHING
101	904-01-031-2903	FLAT WASHER
102	928-01-020-7393	COIL SPRING
103	434-02-005-5002	SUPPORT BASE
104	434-02-042-5001	SHAFT (Early Models Only)
105	901-04-150-0232	1/4-20 X 3/8" HEX SOC SET SCREW
106	434-02-327-5004	CLAMP ASSY
107	905-01-010-2708	3/16" X 1 1/4" SPRING PIN, (Early Models Only)
108	434-02-067-5001	CLAMP LEVER (Early Models Only)
109	434-02-042-5001	SHAFT (Intermediate Models Only), INCL:
110	901-07-261-3250	STUD (Intermediate Models Only)
111	931-01-021-4099	KNOB - SCREW ON (Intermediate Models Only)
112	434-02-405-0001	EYEBOLT (Intermediate Models Only)
113	434-02-103-0001	FLANGE (Intermediate Models Only)
114	422-32-088-0001	NUT (Intermediate Models Only)
115	901-11-320-0091	5/8-18 EYE SCREW (Early Models Only)
116	434-02-103-5001	FLANGE (Early Models Only)
117	902-01-200-9764	5/8-18 JAM NUT (Early Models Only)

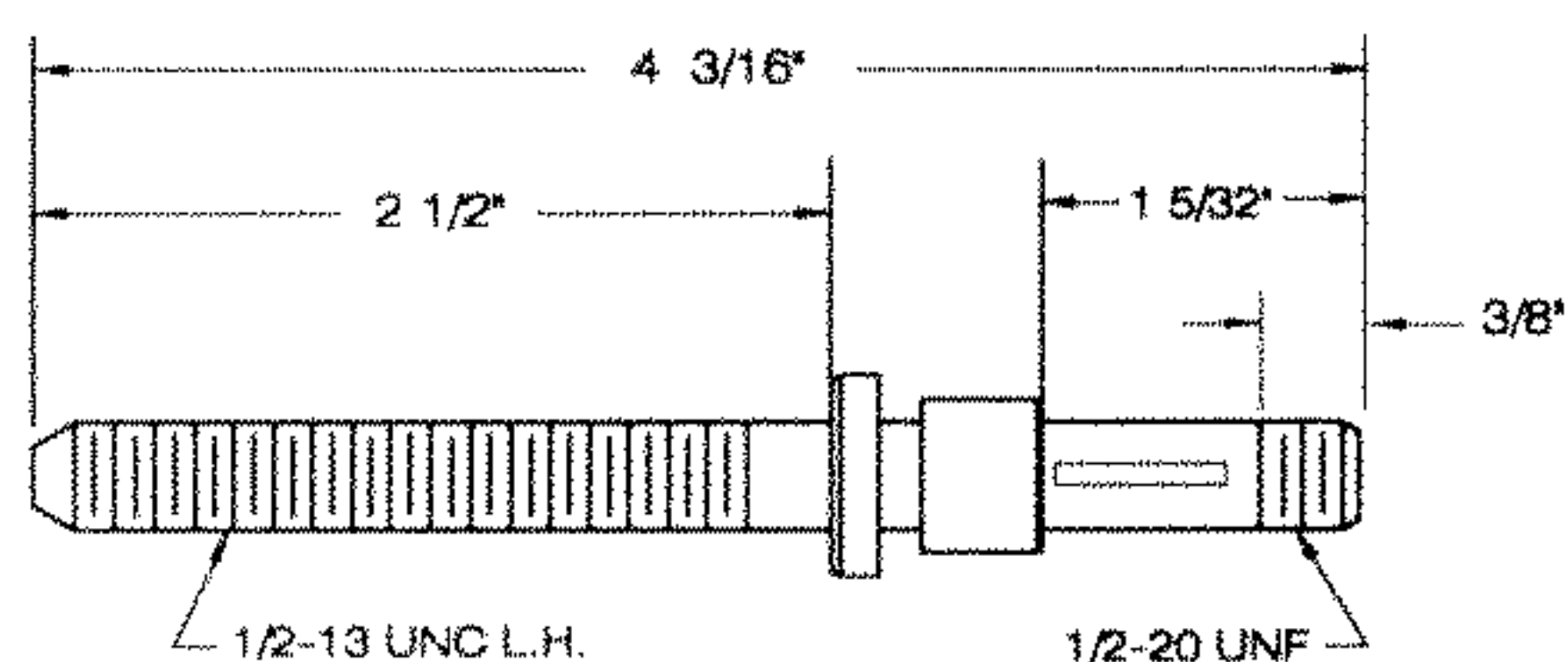
\* NOT SHOWN ASSEMBLED



## SERVICE NOTE A:

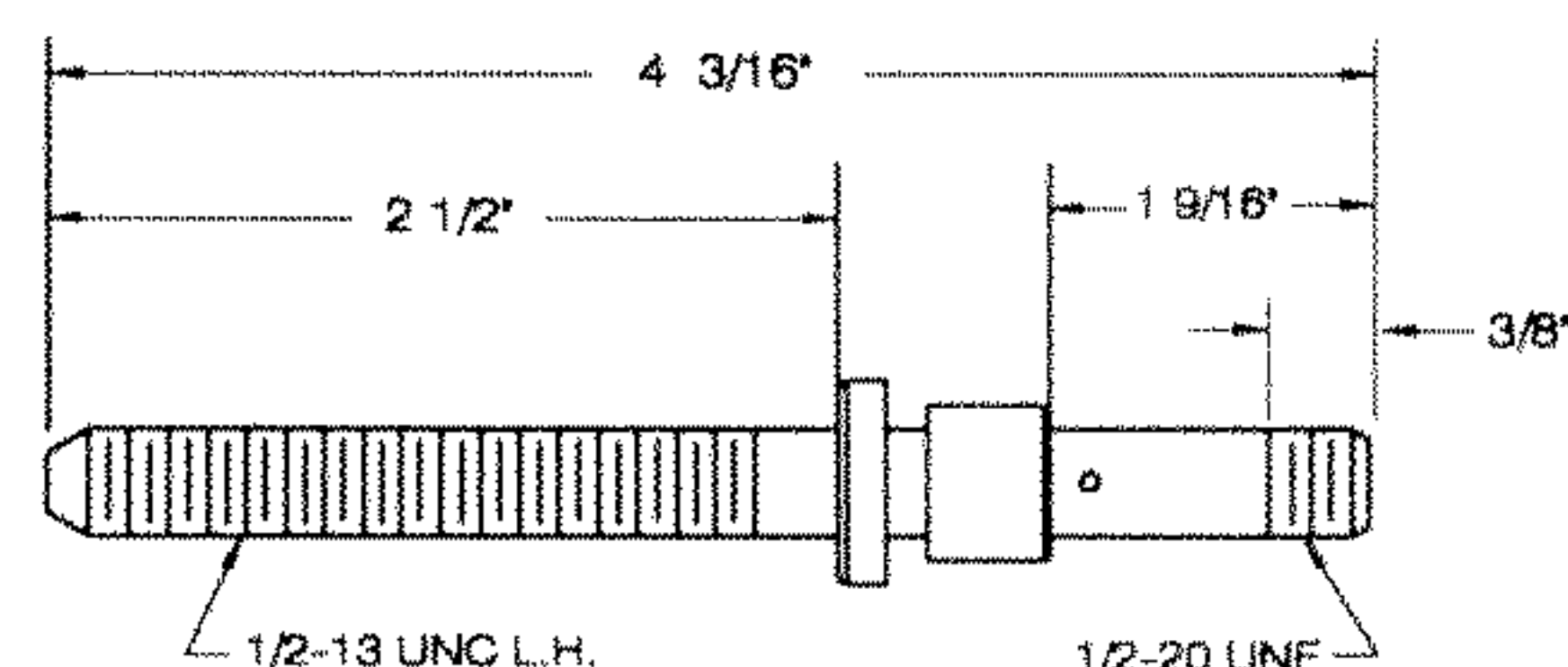
*In the past there have been several tailstock handwheels and adjusting screws used on the tailstock assemblies. The illustrations below are provided to identify which adjusting screw, handwheel and hardware are to be used.*

MAY OF 1956 TO MAY OF 1963



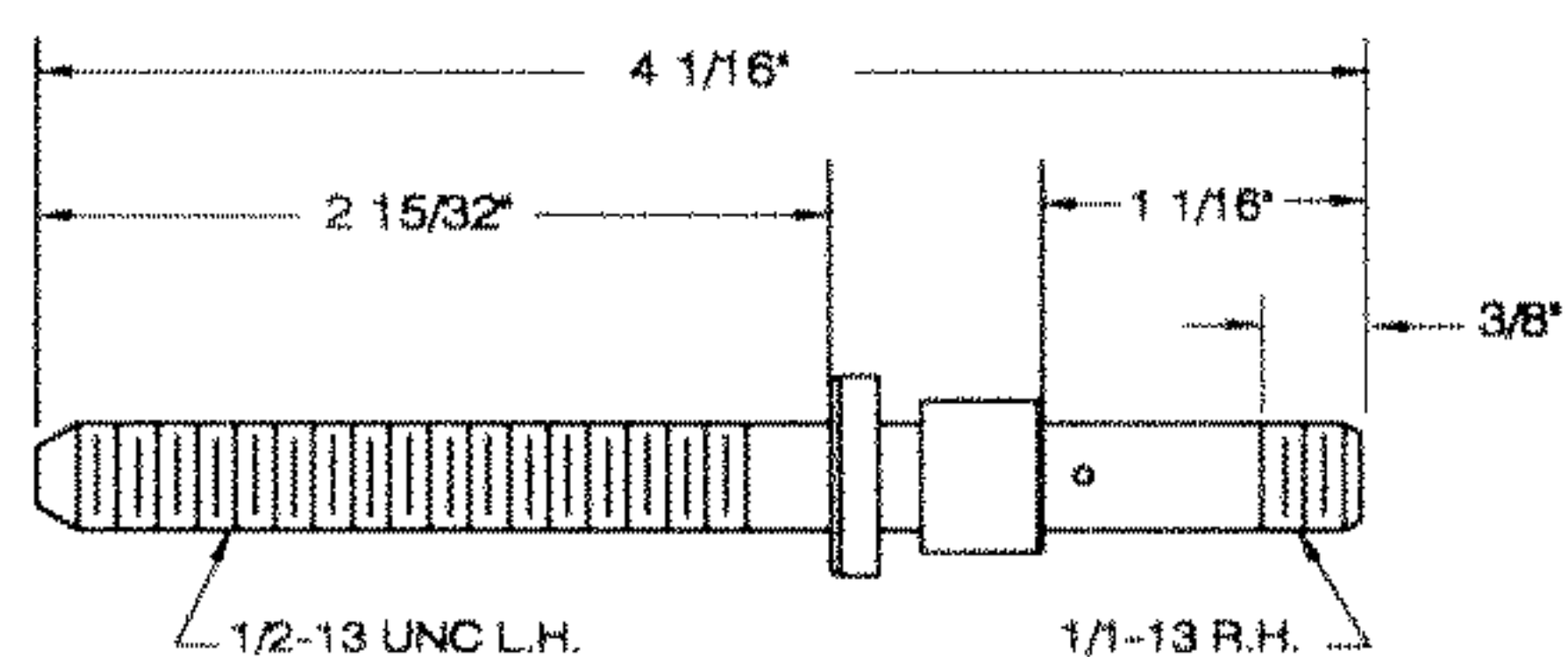
434-04-112-5004 - ADJUSTING SCREW  
930-01-990-3643 - HANDWHEEL  
927-01-100-2617 - KEY  
902-01-020-1227 - 1/2-20 HEX JAM NUT

MAY OF 1963 TO OCT OF 1968



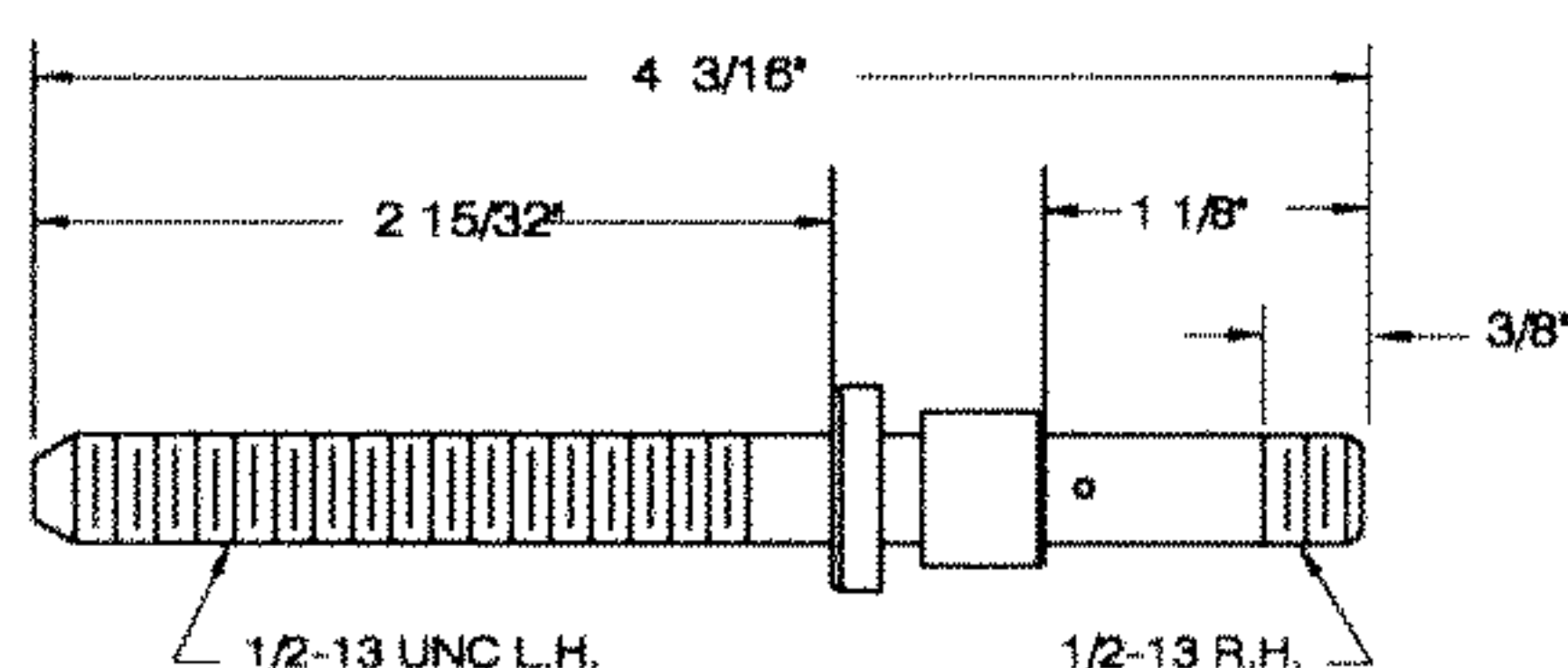
434-04-112-5001 - ADJUSTING SCREW  
930-01-991-9035 - HANDWHEEL  
905-01-010-2704 - 1/8 X 3/4" SPRING PIN  
902-01-020-1266 - 1/2-13 HEX JAM NUT

OCT OF 1968 TO JUNE OF 1970



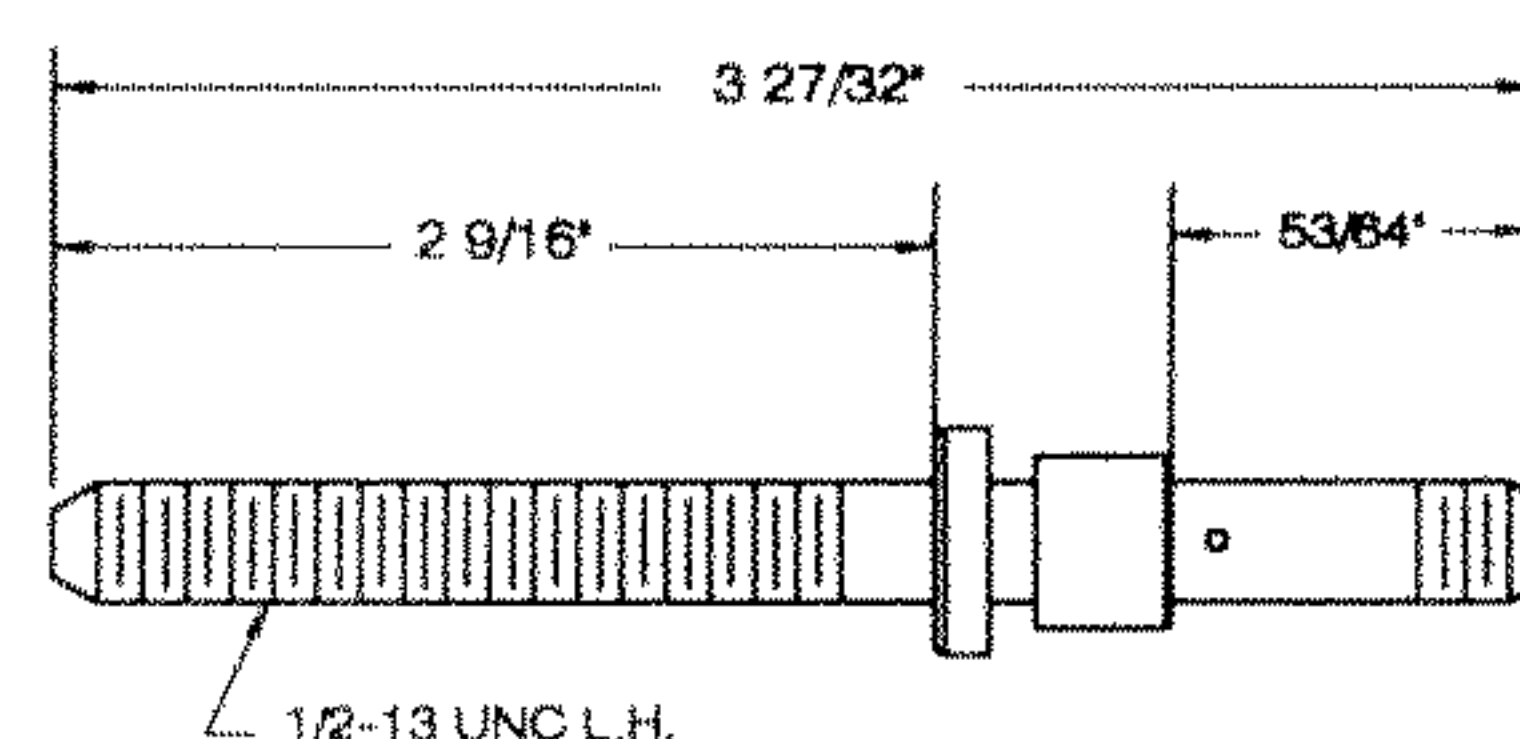
434-04-412-0001 - ADJUSTING SCREW  
930-01-043-1338 - HANDWHEEL  
905-01-010-2704 - 1/8 X 3/4" SPRING PIN  
902-01-020-1266 - 1/2 -13 HEX JAM NUT

JUNE OF 1970 TO JAN 1978

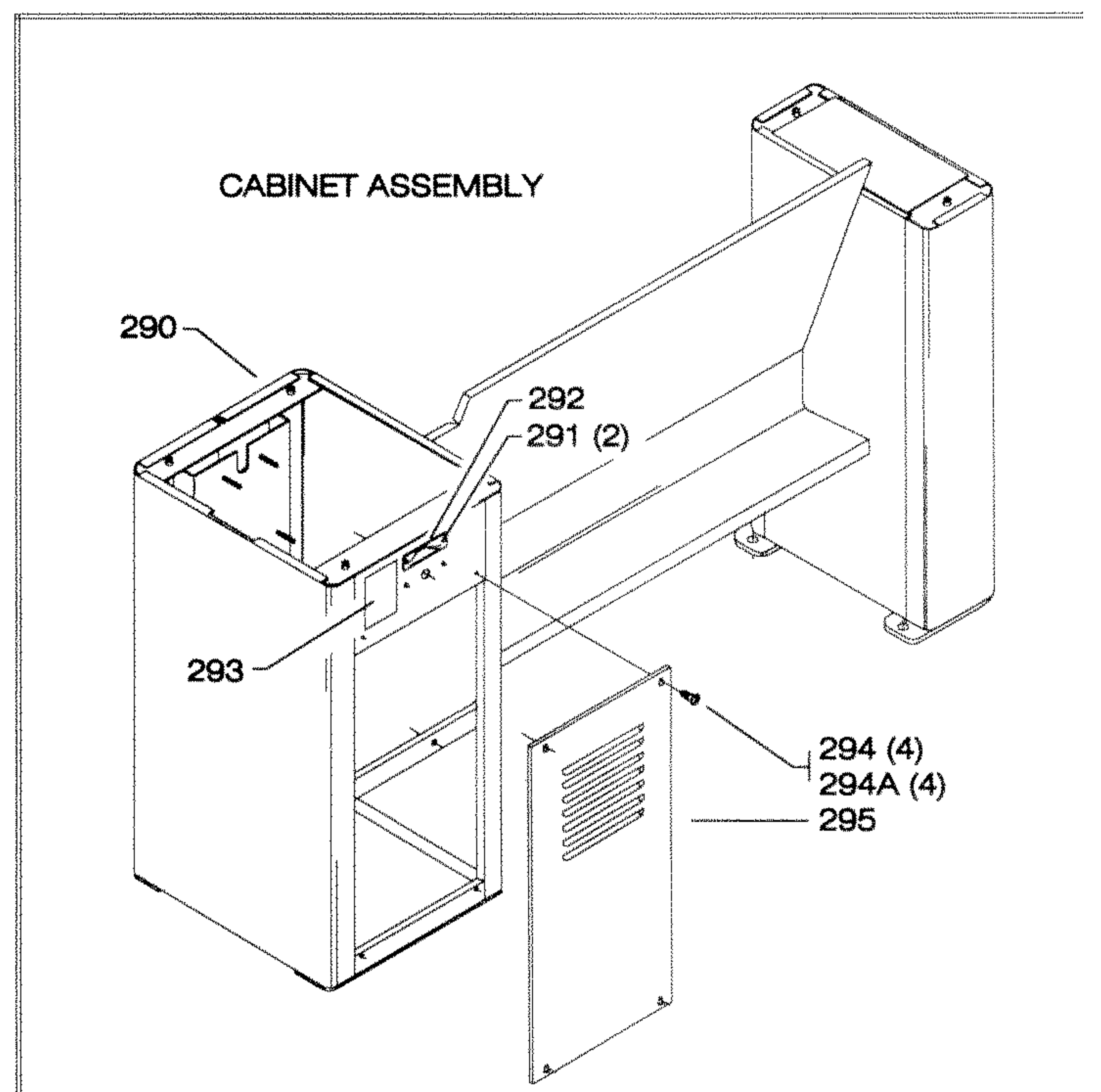
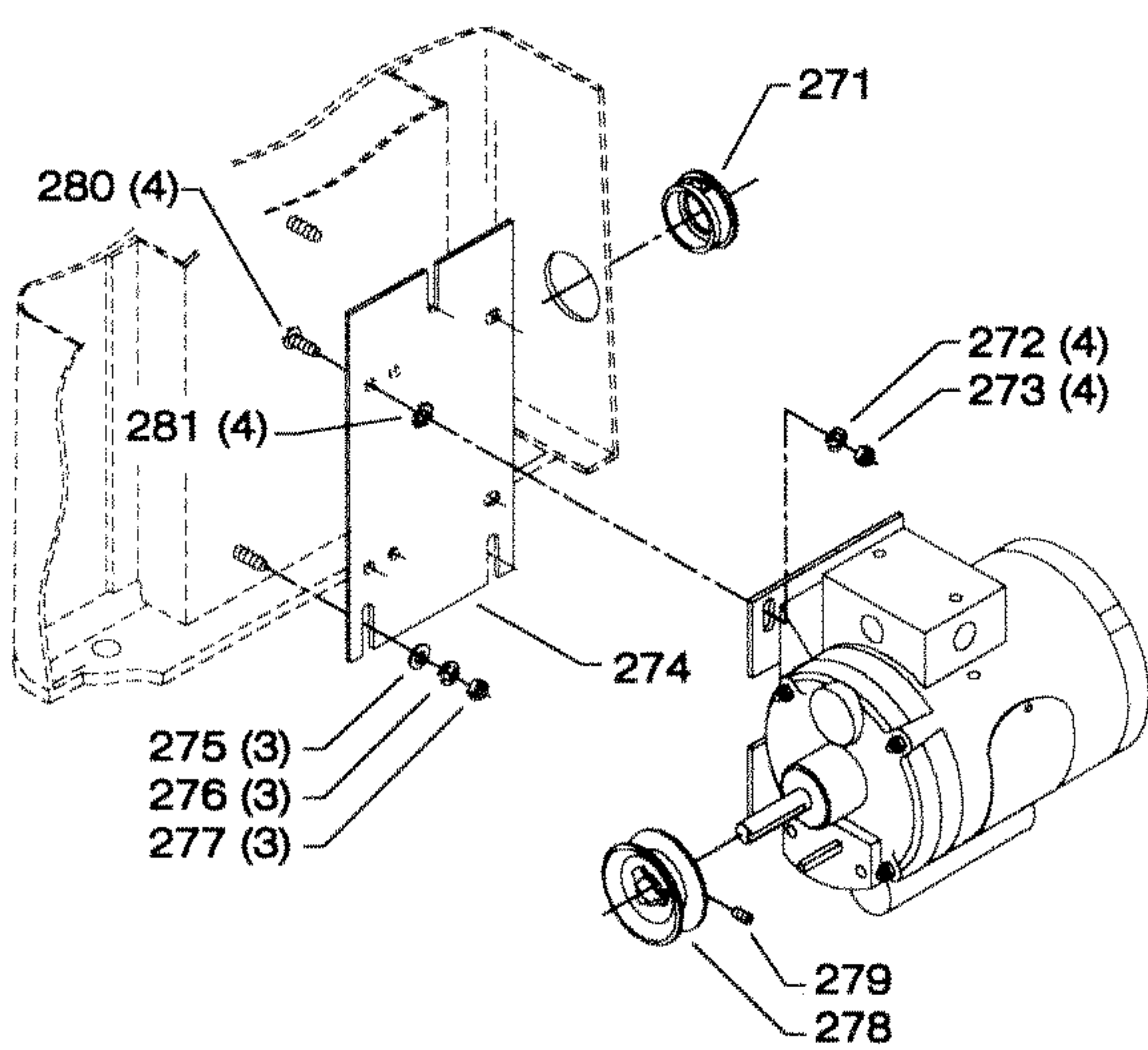
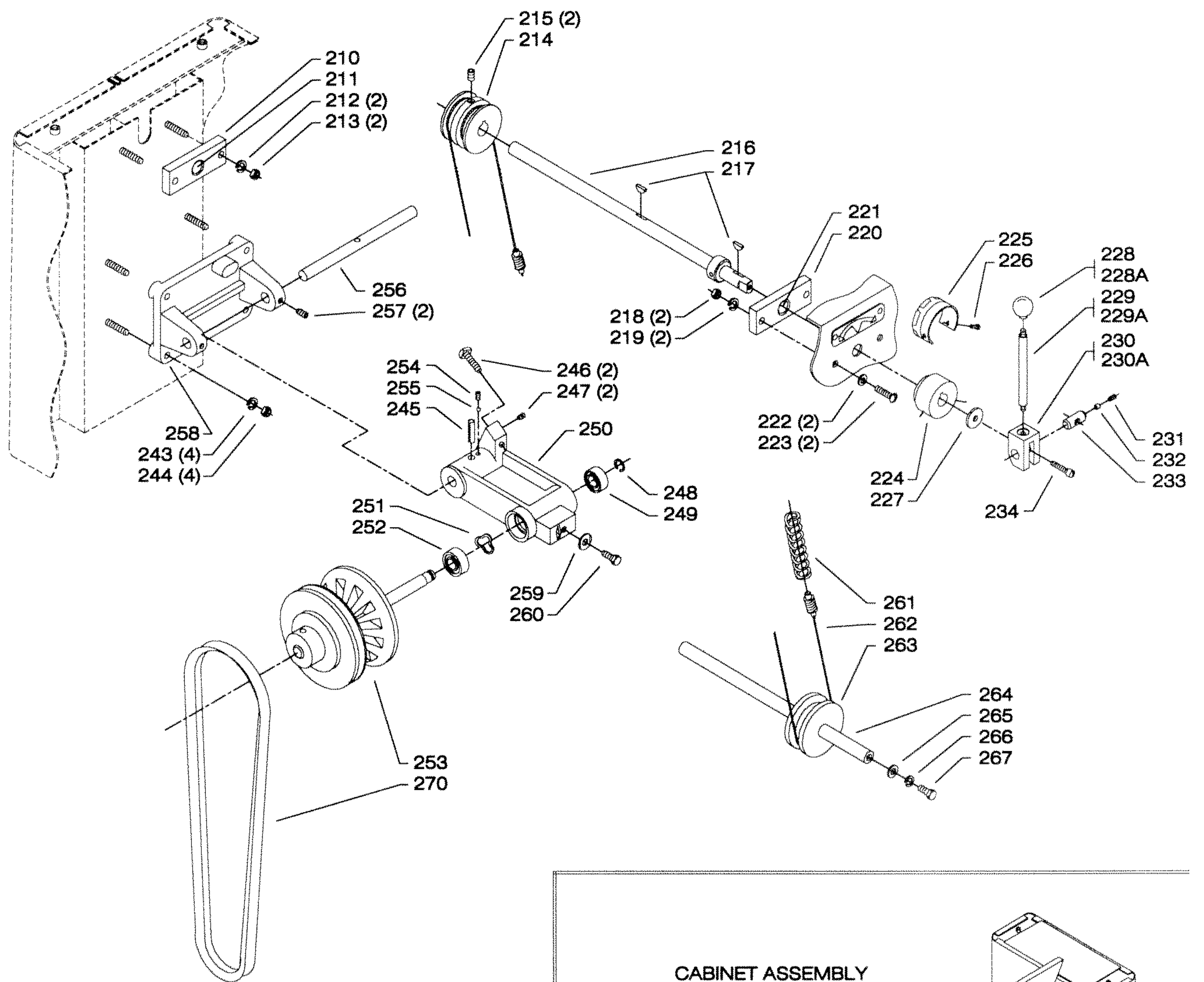


1202432 - ADJUSTING SCREW  
930-01-043-1338 - HANDWHEEL  
905-01-010-2711 - 1/8 X 5/8" SPRING PIN  
902-01-020-1266 - 1/2-13 HEX JAM NUT

JAN OF 1978 TO PRESENT



434-03-112-5005 - ADJUSTING SCREW  
930-01-043-1338 - HANDWHEEL  
905-01-010-2704 - 1/8 X 3/4" SPRING PIN



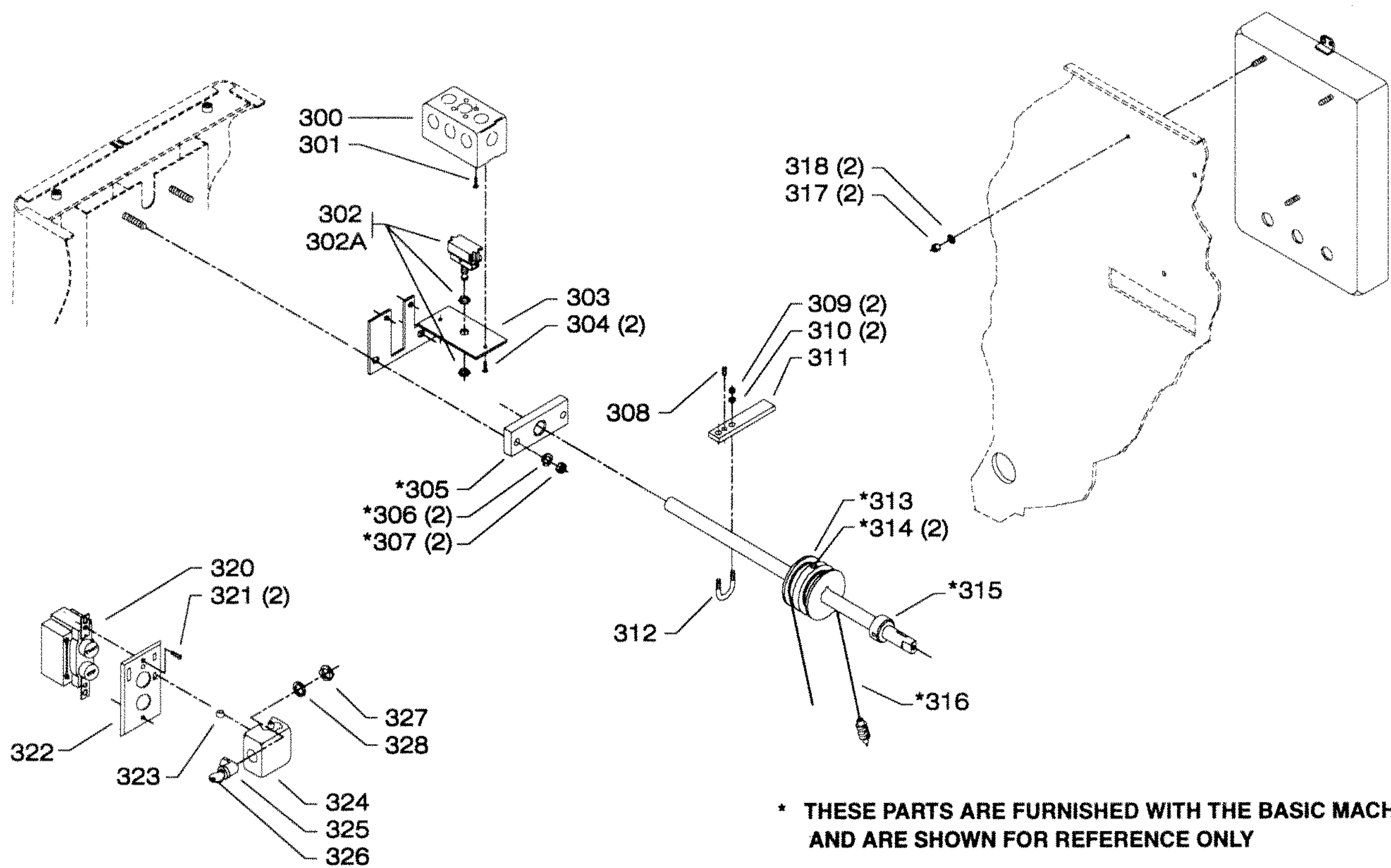


## REPLACEMENT PARTS

REF NO	PART NUMBER	DESCRIPTION	REF NO	PART NUMBER	DESCRIPTION
210	414-02-304-5001	BEARING BLOCK, INCL:	*	434-03-314-5006	VS PULLEY BRACKET ASSY, CONST OF:
211	920-75-011-3906	BEARING	245	905-01-010-5077	5/16" X 1 1/4" SPRING PIN
212	904-02-010-1703	5/16" LOCK WASHER	246	901-04-020-0322	3/8-16 X 1 1/2" HEX SOC SET SCREW
213	902-01-010-1300	5/16-18 HEX NUT	247	901-04-190-9415	1/4-20 X 1/4" HEX SOC SET SCREW
214	414-02-100-5001	SPEED CONTROL PULLEY	248	920-04-021-6618	BALL BEARING
215	901-04-170-0213	5/16-18 X 1/2" HEX SOC SET SCREW	249	904-15-010-7042	EXT RET RING
216	434-03-406-5003	SHAFT W/COLLAR	250	414-02-014-5016	VS PULLEY BRACKET
217	927-01-010-2601	WOODRUFF KEY	251	928-06-023-1012	WASHER
218	902-01-010-1300	5/16-18 HEX NUT	252	920-04-020-5335	BALL BEARING
219	904-02-010-1703	5/16" LOCK WASHER	253	434-03-406-5004	V S PULLEY ASSY
220	414-02-304-5001	BEARING BLOCK, INCL:	254	901-04-190-0203	1/4-20 X 3/8" HEX SOC SET SCREW
221	920-75-011-3906	BEARING	255	402-04-063-5001	DRAG PLUG
222	904-01-010-1615	FLAT WASHER	256	414-02-106-5025	PIVOT SHAFT
223	901-02-010-0515	5/16-18 X 1 1/4" ROUND HD SCREW	257	901-04-150-0217	5/16-18 X 1/2" HEX SOC SET SCREW
224	434-03-407-5001	HUB ASSY, INCL:	258	434-03-014-5005	MOUNTING BRACKET
225	960-03-012-0408	DIAL	259	426-05-027-5001	CLAMP
226	901-06-450-2849	#06 X 1/4" ROUND HD SCREW	260	901-01-060-3104	3/8-16 X 1/2" HEX HD SCREW
227	904-01-031-4954	FLAT WASHER	261	928-02-081-8876	TENSION SPRING
228	1201642	KNOB - SLIP ON ( <i>Current Models Only</i> )	262	434-03-381-5001	CABLE ASSY
228A	931-01-022-0490	KNOB - SCREW ON ( <i>Early Models Only</i> )	263	414-01-362-5001	IDLER PULLEY
229	434-04-111-5001	STUD ( <i>Threaded One End</i> ) ( <i>Current Models Only</i> )	264	434-03-106-5003	IDLER PULLEY SHAFT
229A	414-02-111-5009	STUD ( <i>Threaded Both Ends</i> ) ( <i>Early Models Only</i> )	265	904-01-010-1615	FLAT WASHER
230	434-04-019-5001	7/16-14 CAM BLOCK ( <i>Current Models Only</i> )	266	904-02-020-1704	3/8" LOCK WASHER
230A	434-04-019-5002	5/16-18 CAM BLOCK ( <i>Early Models Only</i> )	267	901-01-060-3104	3/8-16 X 1/2" HEX HD SCREW
231	414-02-071-5018	PIN	270	49-195	V-BELT (37" OC)
232	414-01-074-5001	PLUG	271	438-01-011-0020	INSULATOR
233	901-04-150-0208	1/4-20 X 1/4" HEX SOC SET SCREW	272	904-02-010-1703	5/16" LOCK WASHER
234	901-03-010-0750	5/16-18 X 1" HEX SOC HD SCREW	273	902-01-010-1300	5/16-18 HEX NUT
243	904-02-010-1703	5/16" LOCK WASHER	274	434-03-072-5001	MOTOR PLATE
244	902-01-010-1300	5/16-18 HEX NUT	275	904-01-010-1615	FLAT WASHER
			276	904-02-010-1703	5/16" LOCK WASHER
			277	902-01-010-1300	5/16-18 HEX NUT
			278	41-042	3" OD, 1/2" BORE PULLEY, INCL:
			279	901-04-150-0206	5/16-18 X 5/16" HEX SOC SET SCREW
			278	41-043	3" OD, 5/8" BORE PULLEY, INCL:
			279	901-04-150-0206	5/16-18 X 5/16" HEX SOC SET SCREW
			280	901-03-040-8016	5/16-18 X 3/4" BUTTON HD SCREW
			281	904-03-030-1656	5/16" EXT TOOTH WASHER
			290	434-03-318-5002	CABINET ASSY
			291	901-06-450-2250	#04 X 3/16" ROUND HD SCREW
			292	414-02-072-5008	INSTRUCTION PLATE
			293	434-00-752-0001	WARNING LABEL
			294	901-05-213-1498	#10 X 1/2" HEX WASHER HD SCREW ( <i>Current Models Only</i> )
			294A	901-05-131-7351	#12 X 1/2" ROUND HD SCREW ( <i>Early Models Only</i> )
			295	434-03-031-5004	COVER
			*	NOT SHOWN ASSEMBLED	



REPLACEMENT PARTS



SLOW START FEATURE

REF NO	PART NUMBER	DESCRIPTION	REF NO	PART NUMBER	DESCRIPTION
300	438-01-001-0060	UTILITY BOX	314	901-04-170-0213	5/16-18 X 1/2" HEX SOC SET SCREW
301	901-02-140-0584	#10-32 X 3/8" BIND HD SCREW	315	434-03-406-5003	SHAFT W/COLLAR
302	438-01-017-0181	LIMIT SWITCH W/LOCK NUTS 1 POLE (Current Models Only)	316	434-03-381-5001	CABLE ASSY
302A	438-01-017-0105	LIMIT SWITCH W/LOCK NUT 2 POLE8 (Early Models Only)	317	902-01-120-1034	1/4-20 HEX NUT
303	434-03-014-5007	MOUNTING BRACKET	318	904-03-020-1764	1/4" INT TOOTH WASHER
304	901-02-010-0553	#06-32 X 1/2" ROUND HD SCREW	320	438-01-017-0023	SWITCH
305	414-02-304-5001	BEARING BLOCK	321	901-02-010-0553	#06-32 X 1/2" ROUND HD SCREW
306	904-02-010-1703	5/16" LOCK WASHER	*	438-01-308-0006	MAGNETIC SWITCH PLATE, INCL:
307	902-01-010-1300	5/16-18 HEX NUT	322	438-01-008-0015	COVER PLATE
308	901-04-150-1185	1/4-20 X 5/16" HEX SOC SET SCREW	323	434-03-059-5001	HINGE
309	902-01-120-1034	1/4-20 HEX NUT	324	438-01-008-0016	COVER
310	904-02-020-1702	1/4" LOCK WASHER	325	434-03-368-5001	SWITCH LOCK, INCL:
311	434-03-067-5003	LEVER	326	434-03-033-5001	LOCK KEY
312	434-03-027-0008	CLAMP	327	434-03-079-5003	RETAINER
313	414-02-100-5001	SPEED CONTROL PULLEY	328	904-01-031-2903	FLAT WASHER
			*	NOT SHOWN ASSEMBLED	

STANDARD SAFETY EQUIPMENT

In order to promote tool safety, Delta International Machinery Corp. strictly enforces the policy of repairing or replacing any damaged or missing standard safety equipment on machines presented to Delta Authorized Service Center for service/repairs. Any product which is presented to a Delta Authorized Service Center for repairs which contains missing or damaged standard safety equipment will have that equipment repaired or replaced and the customer will be charged for any such service/repairs. Customers can avoid such charges only if the missing safety component is supplied to the service center at the time of repair.

This parts list is provided to aid in obtaining service parts. Copies of the instruction and maintenance literature can be obtained through the Delta Technical Publications Department or through your local service outlet.